



# i15

Blood Gas and  
Chemistry Analyzer

| Parameter               | Reportable Range     | Resolution | Measurement method    |
|-------------------------|----------------------|------------|-----------------------|
| pH (pH units)           | 6.5 – 8.0            | 0.001      | Potentiometric sensor |
| pO <sub>2</sub> (mmHg)  | 10 – 700             | 0.1        | Amperometric sensor   |
| pCO <sub>2</sub> (mmHg) | 10 – 150             | 0.1        | Potentiometric sensor |
| Na (mmol/L)             | 100 – 180            | 0.1        | Potentiometric sensor |
| K (mmol/L)              | 2.0 – 9.0            | 0.01       | Potentiometric sensor |
| Ca (mmol/L)             | 0.25 – 2.5           | 0.01       | Potentiometric sensor |
| Cl (mmol/L)             | 65 – 140             | 0.1        | Potentiometric sensor |
| Glu (mg/dL or mmol/L)   | 20 – 700/1.1 – 38.9  | 1/0.1      | Amperometric sensor   |
| Lac (mg/dL or mmol/L)   | 2.7 – 180.2/0.3 -20  | 0.1/0.01   | Amperometric sensor   |
| Hct (%PCV or Fraction)  | 10 – 75 /0.10 – 0.75 | 1%/0.01    | Conductance sensor    |

## Specification

|                       |   |
|-----------------------|---|
| Throughput            | Results in 1 minute after sample aspiration                             |
| Sample volume         | 140µl   |
| Quality control       | 3 or 5 levels QC, External electronic simulator                         |
| Display               | 7-inch color LCD Display, 800*480                                       |
| Interface             | 4 x USB 2.0 host, 1 x RS232, WLAN                                       |
| Input device          | Touch screen and barcode scanner  |
| Power supply          | 100-240VAC, 50/60Hz   |
| Battery               | 4200mAh rechargeable lithium-ion battery, 50 samples continuous testing |
| Dimensions (W*H*D)    | 238*153*310 mm  |
| Weight                | 3.65 KG   |
| Operation Environment | 10 °C-31 °C; %RH: 25%-80%; 70 -106.6 KPa                                |

# i15

Blood Gas and Chemistry Analyzer





**Portable, lightweight**

- Capable to run 50 samples with fully-charged battery
- Diagnose at the point of care, patient side, out in the field or exam room

**Easy, Quick and Convenient**

- Zero maintenance
- Minimize hands on time and training requirement
- Auto-sampling
- Report is ready within one minute after sample aspiration

**Accurate and Reliable**

- Innovative microchip liquid control technology and micro-sensor multifunction membrane technology
- High sensitivity and accuracy
- Calibrator, Control and Electronic simulator to TRIPLE guarantee the RESULTS!

**Flexible Data Management**

- Acquire patients' information via barcode/QR code
- Up to 10,000 patient data storage
- 4 USB ports and LAN/WiFi for data management
- Optional data management software

**Multi-parameter cartridge**

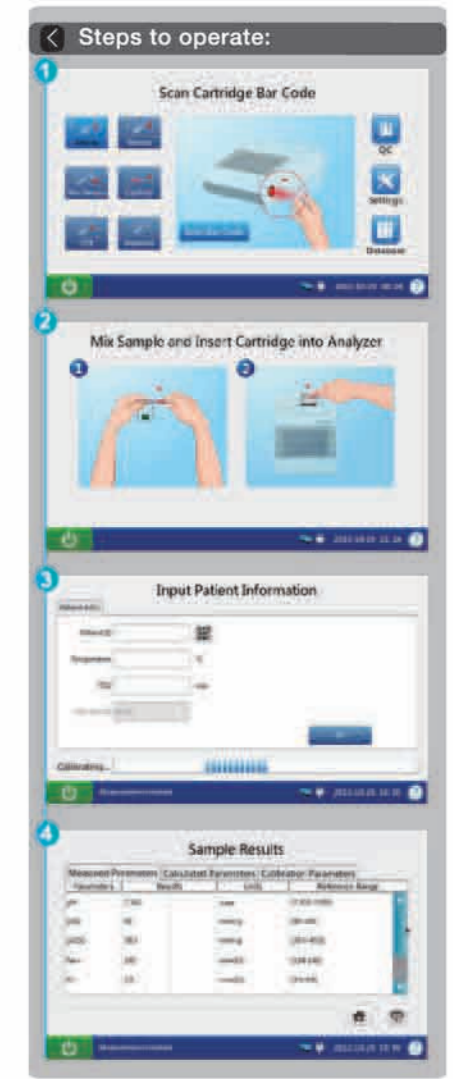
- Multi popular time-sensitive parameters come in one cartridge, including ABG, electrolytes and metabolites
- Single-use cartridge avoids contamination
- Room temperature storage with long shelf-life



Portable and lightweight



Touch screen with built-in multimedia tutorials



**i15 Quality Control System**

Triple Guarantee the Result



**Variety of test Cartridges**

|      | pH | pCO <sub>2</sub> | pO <sub>2</sub> | Na | K | Cl | Ca | Hct | Glu | Lac |
|------|----|------------------|-----------------|----|---|----|----|-----|-----|-----|
| BG3  | —  | —                | —               | —  | — | —  | —  | —   | —   | —   |
| BG8  | —  | —                | —               | —  | — | —  | —  | —   | —   | —   |
| BG4  | —  | —                | —               | —  | — | —  | —  | —   | —   | —   |
| BG9  | —  | —                | —               | —  | — | —  | —  | —   | —   | —   |
| BG10 | —  | —                | —               | —  | — | —  | —  | —   | —   | —   |
| BC4  | —  | —                | —               | —  | — | —  | —  | —   | —   | —   |

Calculated values: cH+, HCO<sub>3</sub>-act, HCO<sub>3</sub>-std, BE(ecf), BE(B), BB(B), ctCO<sub>2</sub>, sO<sub>2</sub>(est), Ca<sup>++</sup>(7.4), AnGap, tHb(est), pO<sub>2</sub>(A-a), pO<sub>2</sub>(a/A), RI, pO<sub>2</sub>/FIO<sub>2</sub>, cH+(T), pH(T), pCO<sub>2</sub>(T), pO<sub>2</sub>(T), pO<sub>2</sub>(A-a)(T), pO<sub>2</sub>(a/A)(T), RI(T), pO<sub>2</sub>(T)/FIO<sub>2</sub>

Future menu in development: BUN/Urea & Creatinine, Coagulation test (ACT, APTT, PT), Immunoassay panels  
CE mark approval for Glu and Lac is pending